



# GAT MONTHLY MEMBERSHIP PROGRESS REPORT

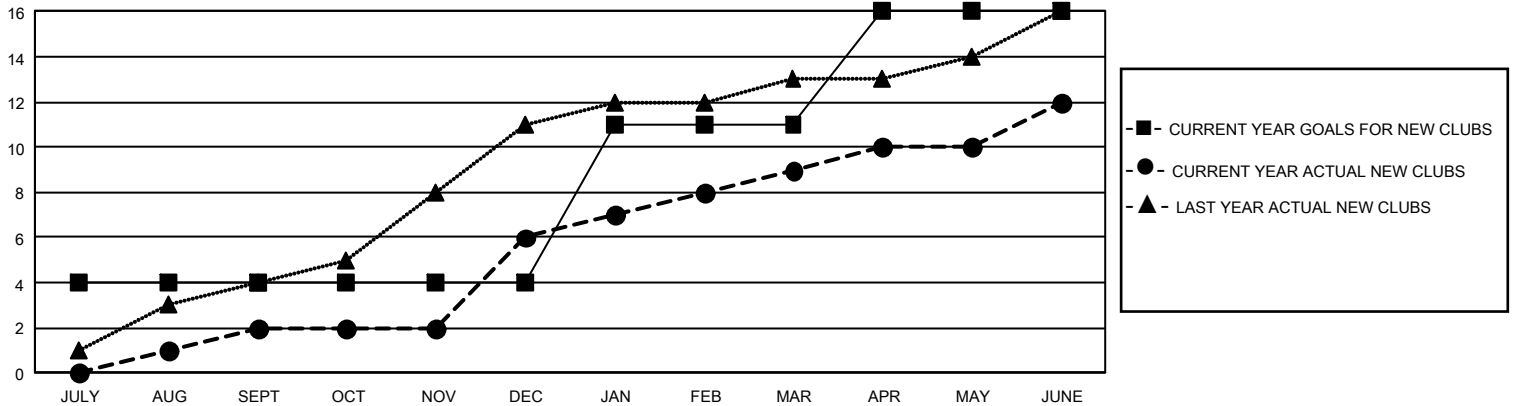
Results as of: 6/30/2025

## GMT Constitutional Area 8, Group D

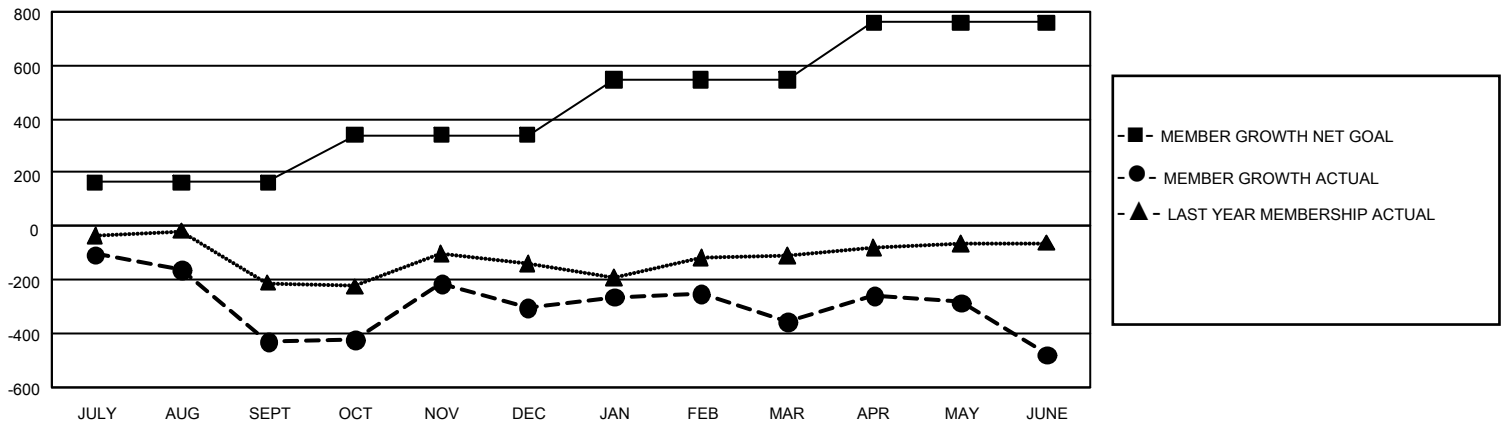
REPORT DOES NOT INCLUDE CLUBS IN UNDISTRICTED AREAS.

| Clubs                 |               |           |               | Members               |                        |                      |  |
|-----------------------|---------------|-----------|---------------|-----------------------|------------------------|----------------------|--|
| RESULTS FOR 2024-2025 |               |           |               | RESULTS FOR 2024-2025 |                        |                      |  |
| QUARTER               | NEW CLUB GOAL | NEW CLUBS | DROPPED CLUBS | QUARTER               | MEMBER GROWTH NET GOAL | MEMBER GROWTH ACTUAL | DROPPED MEMBERS ACTUAL (including transfers) |
| JULY/AUG/SEPT         | 12            | 2         | 3             | JULY/AUG/SEPT         | 163                    | 223                  | 619  |
| OCT/NOV/DEC           | 0             | 4         | 10            | OCT/NOV/DEC           | 178                    | 602                  | 429  |
| JAN/FEB/MAR           | 21            | 3         | 2             | JAN/FEB/MAR           | 206                    | 300                  | 304  |
| APR/MAY/JUNE          | 15            | 3         | 5             | APR/MAY/JUNE          | 214                    | 393                  | 449  |

GOALS AND ACTUAL NEW CLUBS CUMULATIVE



GOALS AND ACTUAL MEMBERS CUMULATIVE



DROPPED CLUBS: 20

115 CLUBS OF 200 ADDED 1 OR MORE NEW MEMBERS

### GENDER DISTRIBUTION

|                      |                |
|----------------------|----------------|
| MALE                 | 1,437 (38.05%) |
| FEMALE               | 2,338 (61.90%) |
| NON BINARY           | 1 (0.03%)      |
| PREFER NOT TO ANSWER | 1 (0.03%)      |

### DROPPED MEMBERS

|                |       |
|----------------|-------|
| DECEASED       | 11    |
| CLUB CANCELLED | 344   |
| OTHER          | 1,438 |
| TOTAL          | 1,793 |

[CLICK HERE FOR CUMULATIVE MEMBERSHIP DATA](#)

|                                 |     |
|---------------------------------|-----|
| TOTAL FAMILY UNIT MEMBERS       | 495 |
| FAMILY MEMBERS PAYING HALF DUES | 283 |